

USG BORAL SHEETROCK® BRAND PLASTERBOARD BROCHURE



A LIGHTWEIGHT BOARD TO
LIFT YOUR PRODUCTIVITY.

USG BORAL
INNOVATION INSPIRED BY YOU.™



[USGBoral.com](https://www.usgboral.com)

Plasterboard

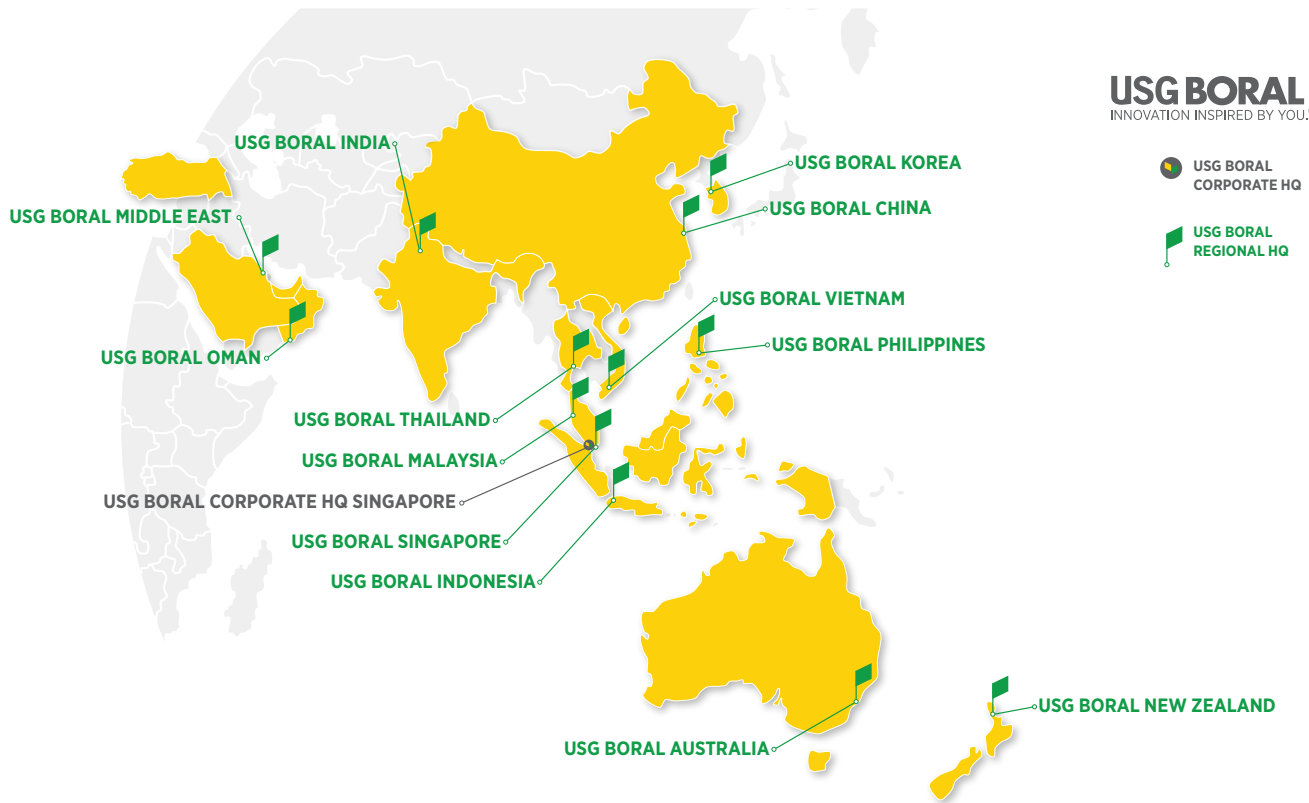
Ceilings

Interior Finishes

Metal Framing

Substrates

THE NAME WITH THE HERITAGE



USG Boral brings more than 100 years of science-based plasterboard innovation to our market—one that is job-site proven with millions of square meters of this technology installed worldwide. It delivers consistent quality, strength and ease of use that contractors, builders and dealers want and need.

USG Boral SHEETROCK® Brand plasterboards are lighter than similar products in their class, helping customers build easily and quickly. They are the only plasterboard to feature the Sag-Defying Strength™ that allows the ceiling frame to span further and provide savings in terms of value engineering.

USG Boral SHEETROCK® Brand technology produces a uniformed core that helps minimize the chance of damage during handling and installation. A knock-on effect of the implementation of this technology in our plants dramatically improves the overall quality of the board.

INNOVATION INSPIRED BY YOU™

Research was conducted across our Asia Pacific businesses, which included hundreds of builders, contractors and dealers in which a premium product was presented. The feedback was loud and unanimous. The key innovation that will improve the way we build today is a product that is:



Stronger

Better logistics management

A lighter board that is easier to lift puts less strain on the equipment and allows more to be loaded on trucks - yielding fuel and freight savings. Stronger boards mean less chances of broken edges, less call backs and better returns on stocking USG Boral SHEETROCK® Brand plasterboards.



Lighter

Work easily and quickly

We listened to workers who work with our plasterboards everyday and saw an opportunity for a lighter board that is easier to use on the job. A lighter product allows contractors to work faster and do more, with the promise of less reworks due to the better kilo-for-kilo strength and improved sag performance.



Consistent Quality

Eliminate complaints and delays

Developers are looking for a ceiling board with little to no sag. They want a product that offers consistent quality on every job and eliminates complaints and delays. With the demand of a lighter board, USG Boral SHEETROCK® Brand plasterboard is also designed to maintain its performance characteristics such as core hardness and flexural strength while offering marked improvement in its physical dimensions.

All these attributes present itself in USG Boral SHEETROCK® Brand plasterboard that allows you to make a positive impact on your company's performance and reputation.

SCIENCE-BASED INNOVATION

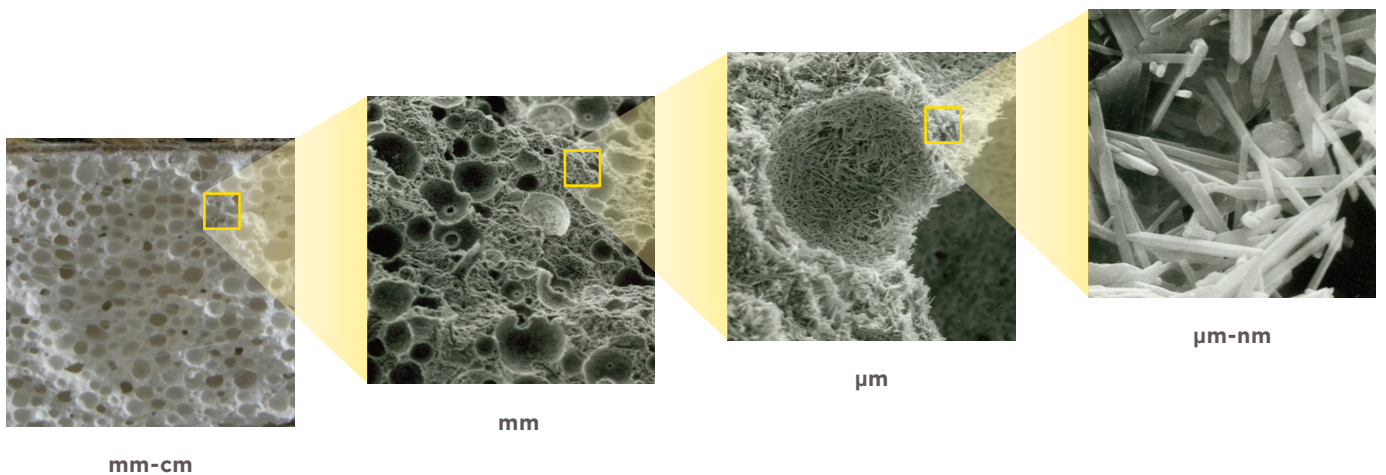


At USG Boral, we use patented technology to create our latest plasterboard innovation. Utilizing technology that ranges from that which can be seen by the human eye to nanotechnology that only the most advanced scientific equipment can recognize, USG Boral SHEETROCK® Brand plasterboard is unlike any plasterboard product in our market.

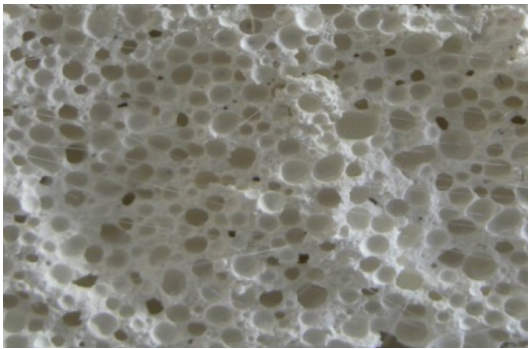
Advanced research and development was conducted to bring scientific theories to manufacturing lines that produces USG Boral SHEETROCK® Brand plasterboards.

In the hot and humid South East Asian climate, these plasterboards have better core strength that translates to better sagging resistance performance compared to standard plasterboard.

On top of the Sag-Defying Strength™, the following pages will show how USG Boral SHEETROCK® Brand technology was used to make plasterboards that are easy to lift and score and snap better while offering boards of visibly superior quality.

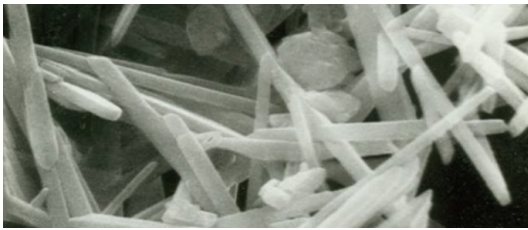


The USG Boral SHEETROCK® Brand technology is incorporated into our plasterboards, bringing more than 100 years of science-based, plasterboard innovation to our market that is job-site proven. There are three fundamental differences between a typical standard and USG Boral SHEETROCK® Brand plasterboard:



Core Structure

USG Boral SHEETROCK® Brand plasterboard has a more uniform distributed core structure compared to standard plasterboard. This is a result of careful and precise engineering that generates void structure (“bubbles”) in a variety of sizes that are optimized for strength. The USG Boral SHEETROCK® Brand technology then allows for its consistent distribution in every piece of plasterboard at a lower weight. One can find similar lightweight engineered materials in nature (human bone) as well in aerospace (the latest Airbus 380 and Boeing 787).

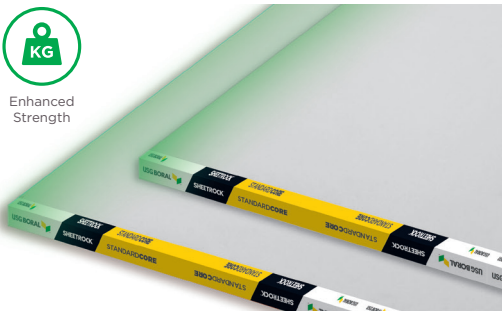


Crystal Structure

USG Boral SHEETROCK® Brand technology fuses together gypsum crystal at the microscopic level to enhance the strength of the interlocking structure of the gypsum matrix. Crystal fusion creates the truly unique “Sag-Defying Strength™”, even at lower weights.



Enhanced
Strength



Engineered Layer System

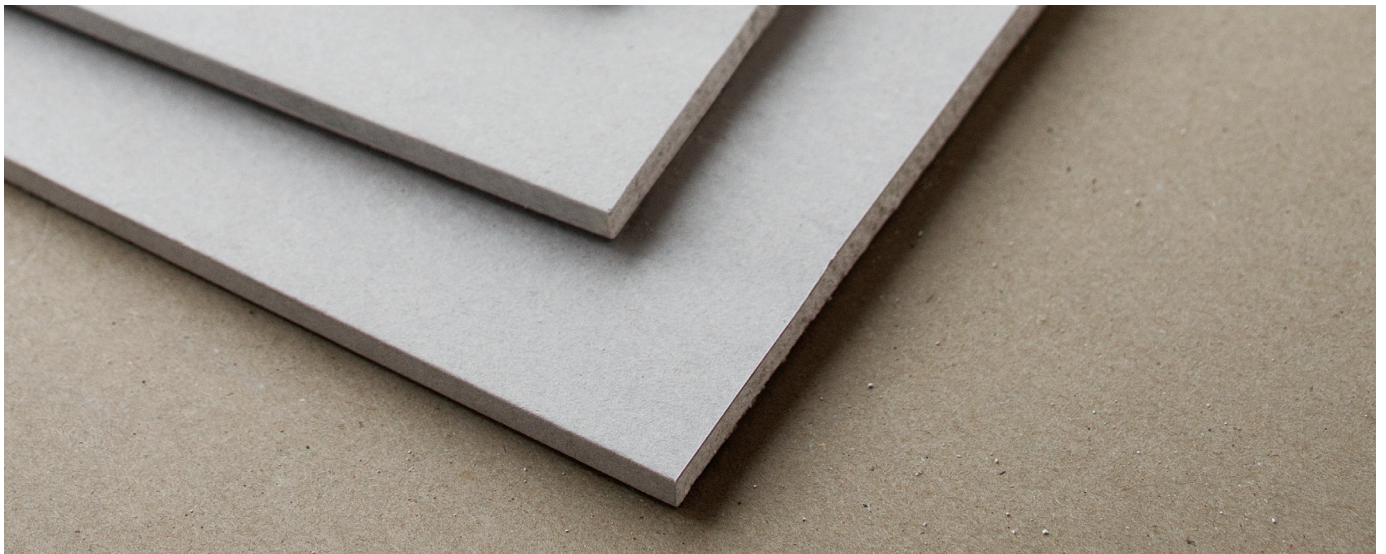
In order to create better plasterboard edges that will improve the lifting, carrying and usability, the proprietary USG Boral SHEETROCK® Brand technology enhances the strength of the tapered edges. This is done by the careful control of the manufacturing process, utilizing the proprietary Engineered Layer System.

THE RESULTS OF SCIENCE-BASED INNOVATION

USG Boral SHEETROCK® Brand Plasterboard Available In:

StandardCORE Plasterboard (Walls)

Synia & Synia MR Plasterboard (Ceilings)



USG Boral SHEETROCK® Brand plasterboard features innovation that allows builders to do what they do best—only easier, faster and with better results.



Features and Benefits

Lightweight USG Boral SHEETROCK® Brand Plasterboard

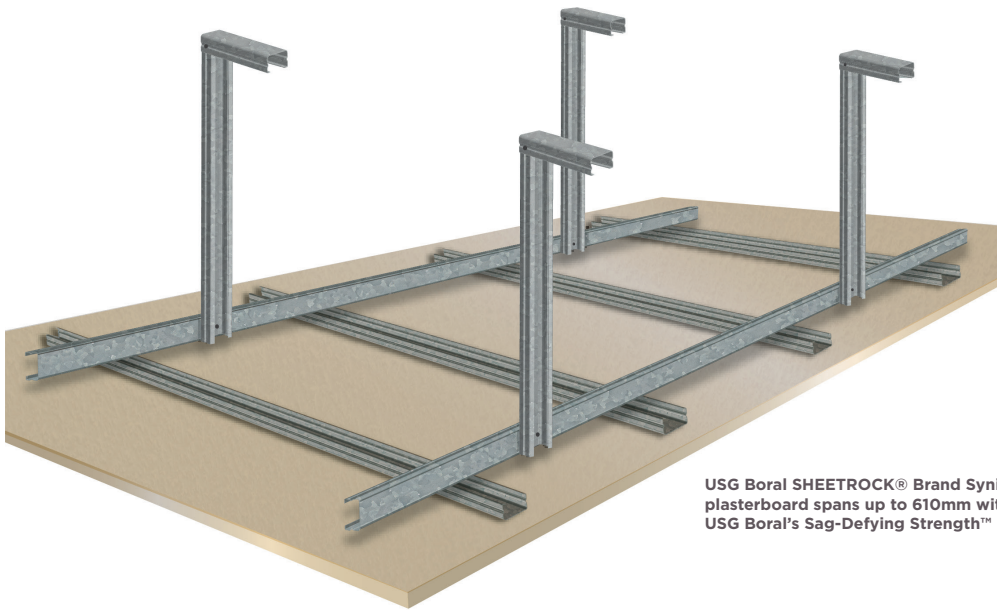
- A light weight product can benefit workers because they lift more and work faster
- More than 15% lighter as compared to products in the same class (12.5mm boards)
- Easy to carry and install

A Consistent Core That's Easier to Score and Snap

- A neater straighter snap line, bringing about less waste and potential material cost savings
- Less dust for a safer work environment
- Higher quality product that reduces callbacks and warranty costs

Stronger Sag-Defying Strength™

- Fundamentally re-engineered for improved strength-to-weight ratio
- Superior sag resistance performance for greater spans



USG Boral SHEETROCK® Brand Synia plasterboard spans up to 610mm with USG Boral's Sag-Defying Strength™

Metal Framing Members that Allow Maximum Spans When Used with USG Boral SHEETROCK® Brand Plasterboard

By allowing the metal framing system to span up to 610mm, we are able to value engineer up to 17% of metal framing cost savings.

USG Boral SHEETROCK® Brand Plasterboard Adheres to the Following Standards



Singapore Green Label



BS EN 520



An illustration depicting USG Boral SHEETROCK® Brand plasterboard's Sag-Defying Strength™ against products in the same class

Australia
China
India
Indonesia
Malaysia
Middle East
New Zealand
Thailand
Philippines
Singapore
South Korea
Vietnam

USG Boral Singapore

8 Boon Lay Way #02-06

TradeHub 21

Singapore 609964

Tel: (65) 6272 9272

Fax: (65) 6278 5310

Email: contact-us.sg@usgboral.com