

Twin Stud - Fire Rating 2 Hours - Acoustic (CWS-5)

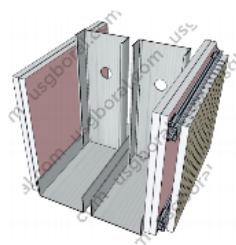
Description

Frame : JayaBMS Wall Track, JayaBMS Deflection Head Track, JayaBMS C Stud, JayaBMS Furring

Lining : 2 layers of USG Boral Firestop 16mm (both sides)

+ 1 layer of USG Boral Jayabell 12mm (1 side)

Weight : ± 63.5 kg/m²



STUD SIZE (mm)		MAXIMUM HEIGHT (mm) Non-Load Bearing Studs			WALL THICKNESS (mm)	FIRE RATING (minutes)	ACOUSTIC RATING (STC)	
Width	Thickness	@600mm centres	@400mm centres	Grade BS 5234			Without Insulation	Insulation Mineral Wool 50mm
64	0.5	3150	3650	Severe Duty	249	120	55	71
	0.7	3550	4200			120		
76	0.5	3600	4300		273	120	56	72
	0.7	4150	5100			120		
92	0.5	4350	5350		305	120	57	72
	0.7	5150	6550			120		
100	0.5	4750	6000		321	120	58	72
	0.7	5750	7350			120		
150	0.7	8800	10050	421	120	60	72	