

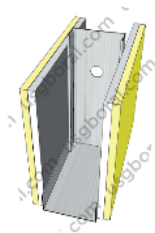
Fire Rating 1 Hour Optimum - Fiberock (SSF-28)

Description

Frame : JayaBMS Wall Track, JayaBMS Deflection Head Track, JayaBMS C Stud

Lining : 1 layer of Jayaboard Sheetrock 12mm (inner) + 1 layer of USG Fiberock Aqua-Tough 12.7mm (outer) (both sides)

Weight : $\pm 43 \text{ kg/m}^2$



STUD SIZE (mm)		MAXIMUM HEIGHT (mm) Non-Load Bearing Studs			WALL THICKNESS (mm)	FIRE RATING (minutes)	ACOUSTIC RATING (STC)	
Width	Thickness	@600mm centres	@400mm centres	Grade BS 5234			Without Insulation	Insulation Mineral Wool 50mm
64	0.5	4200	4400	Severe Duty	113.4	60	45	54
	0.7	4350	4650			60		
76	0.5	4800	5100		125.4	60	46	54
	0.7	5050	5450			60		
92	0.5	5750	6100		141.4	60	46	54
	0.7	6050	6350			60		
100	0.5	6150	6400		149.4	60	47	54
	0.7	6350	6700			60		
150	0.7	8050	8750		199.4	60	49	54