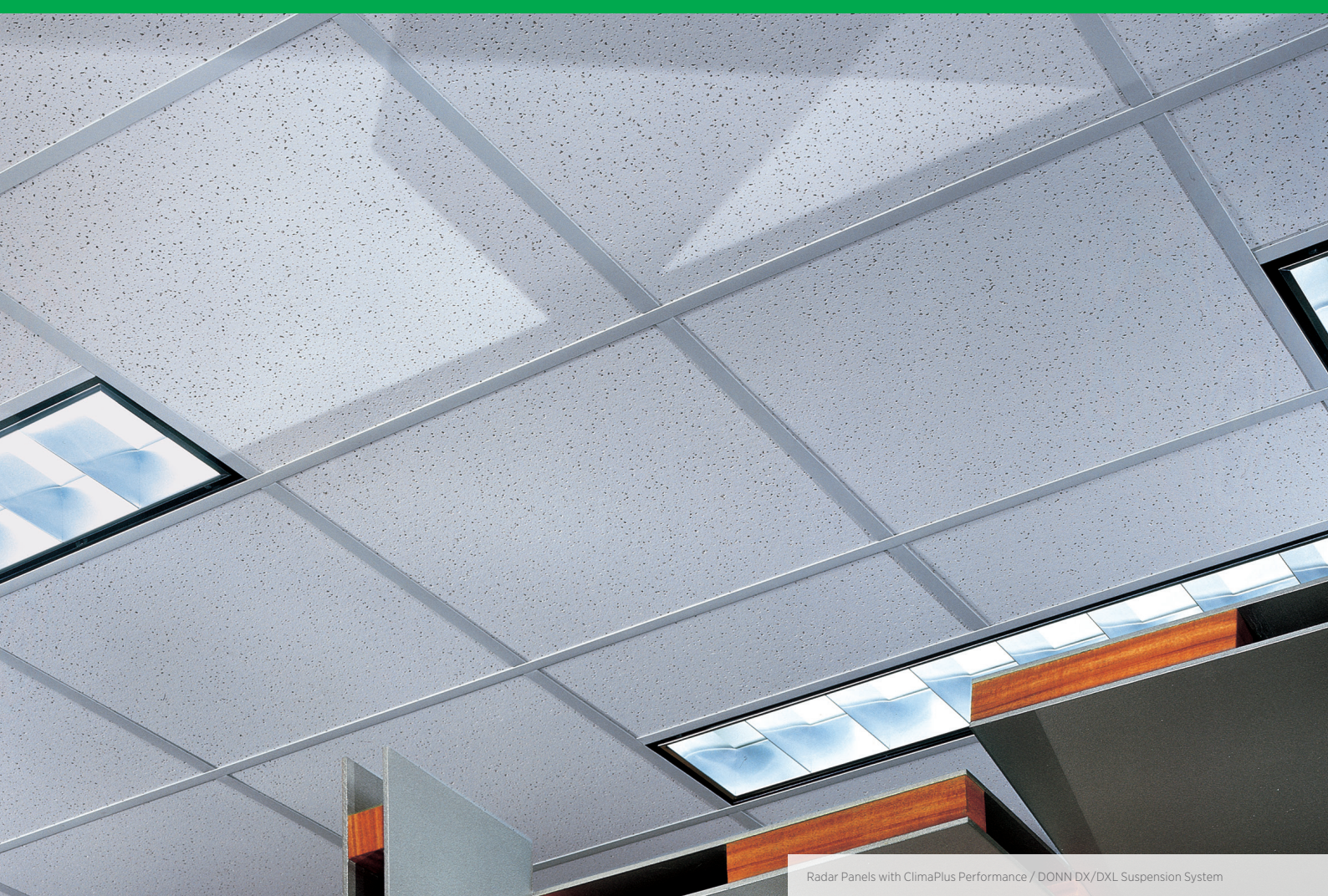


RADAR™ CLIMAPLUS™



Radar Panels with ClimaPlus Performance / DONN DX/DXL Suspension System

FEATURES AND BENEFITS

- Non-directional pattern
- ClimaPlus™ 30-year lifetime system warranty to withstand conditions up to 49°C (120°F)/99% relative humidity without visible sag when used with a DONN® Brand suspension system

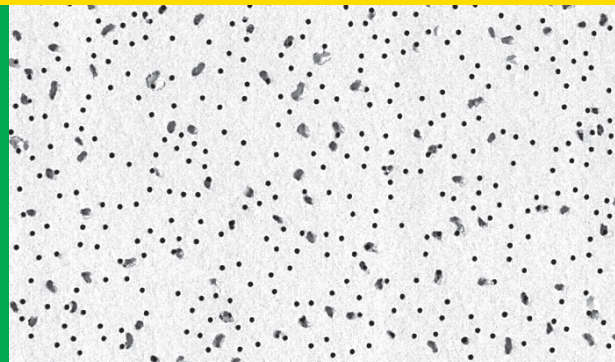
APPLICATIONS

- Schools
- Corridors
- Lobby areas
- Offices
- Retail stores

SUBSTRATE

- Water-felted mineral fiber

Lightly textured panel



RADAR CLIMAPLUS PANELS

Edge	Panel Size ³	Class	Item No.	NRC	CAC Min.	LR ²	Color	Grid Options	VOC Emissions	Anti-Mold & Mildew	Recycled Content ¹
SQ	2 x 2 x 5/8" 600 x 600 x 16mm	Class A	2210 ME2210	.60	33	.84	White	A, B, C	Low		28 - 45%
	2 x 4 x 5/8" 600 x 1200 x 16mm	Class A	2410 ME2410	.60	34	.84	White	A	Low		28 - 45%
SLT	2 x 2 x 5/8" 600 x 600 x 16mm	Class A	2220 ME2220	.60	33	.84	White	D	Low		28 - 45%
	2 x 4 x 5/8" 600 x 1200 x 16mm	Class A	2420 ME2420	.60	34	.84	White	D	Low		28 - 45%
FLB	2 x 2 x 5/8" 600 x 600 x 16mm	Class A	2230 ME2230	.60	33	.84	White	E, F, G, H, I	Low		28 - 45%
	2 x 4 x 5/8" 600 x 1200 x 16mm	Class A	2430 ME2430	.60	34	.84	White	E, F, G, H, I	Low		28 - 45%

LEGEND

Low Emission (VOC Class)

Meets the emission test criteria as low-emitting prescribed by the Singapore Green Building Council (SGBC) following ASTM D5116-06 testing methods

ClimaPlus Superior Performance

Contains a broad-spectrum antimicrobial additive on the face and back of the panel that provides resistance against the growth of mold and mildew.

GRID PROFILE OPTIONS

A DX® DXI DXII DXIII	B Centricitee™ DXT™	C Omega™ DXM™	D DX® DXI DXII DXIII	E Centricitee™ DXT™	F Fineline® 1/8" DXF™	G Fineline® DXFF™	H Omega™ DXM™	I IDENTITEE™ DXI™

PHYSICAL DATA/
FOOTNOTES

ASTM E1264 Classification
Type III, Form 2, Pattern C, E

ASTM E84 surface burning characteristics
Class A
Flame spread: 25
Smoke developed: 50

Imperial Weight
0.81 lb./ft.²

Metric Weight
3.95-3.98 kg/m²

Thermal Resistance
R-1.7

Backloading
Refer to Installation and Maintenance

Footnotes

- For details, see LEED report tool at usgdesignstudio.com.
- LR values are shown as averages.
- Not all panel sizes available in all geographic areas, some metric sizes available to order.

Short Specification:

- Ceiling system shall comprise USG Radar™ CLIMAPLUS™ high humidity / fire resistant acoustical ceiling panels in (DONN Centricitee 15mm [9/16"] / DONN DX 24mm [15/16"] / DONN Fineline 15mm [9/16"] / DONN Omega 15mm [9/16"] face / DONN Identitee 15mm [9/16"] exposed grid including wall trim as manufactured by USG Interiors, LLC.
- Panels shall have NRC 0.55.
- Panels shall have CAC 33-34.
- Nominal size (600mm x 600mm / 600mm x 1200mm) x 16mm / (2' x 2' / 2' x 4') x 5/8").
- Edge detail shall be (Fineline bevel [FLB] / Shadowline Tapered [SLT] / Square edge [SQ]).
- Limiting Conditions - Maximum 49°C (120°F)/99% RH.